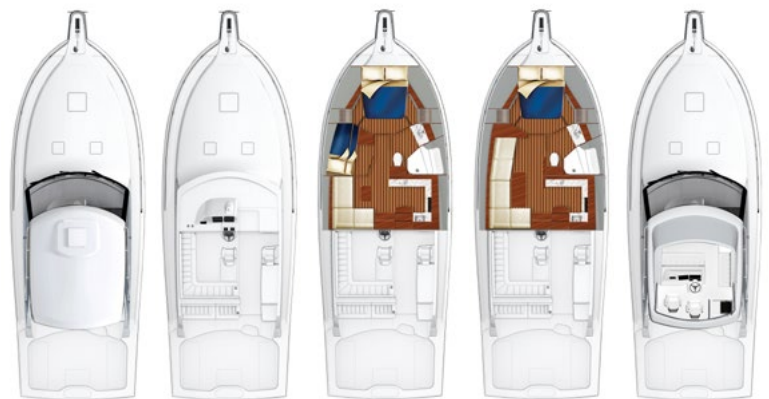




STANDARD SPECIFICATIONS

ARRANGEMENTS

OVERALL LENGTH	44'7"	13.59 M
OVERALL LENGTH W/BOW PULPIT	47'7"	14.50 M
WATERLINE LENGTH	39'0"	11.88 M
BEAM	16'6"	5.03 M
WEIGHT DISPLACEMENT	49,700 LB	22,543 KG
DRAFT	4'0"	1.22 M
FUEL CAPACITY	800 GAL	3,028 L
FRESHWATER CAPACITY	100 GAL	379 L
HOLDING TANK	43 GAL	163 L
DIESEL GENERATOR	17.0 KW	
TWIN CAT C-12.9 DIESEL ENGINES	835 BHP	850 MHP



The specification measurements are approximations and subject to variance.

HARDTOP
ARRANGEMENT

HELM DECK
ARRANGEMENT

OPTIONAL
ARRANGEMENT

STANDARD
ARRANGEMENT

FLYBRIDGE
ARRANGEMENT

GENERAL ARRANGEMENT

1 stateroom, 1 head arrangement

- 2 stateroom, 1 head arrangement OPT
- Express flybridge with bridge ladder, includes integrated fiberglass hardtop with single pane windshield with windshield wipers, A/C on helm deck, and aft soft enclosure OPT
- Integrated express fiberglass hardtop with single pane windshield with windshield wipers, A/C on helm deck, and aft soft enclosure..... OPT

COCKPIT / HARDTOP / ELECTRONICS

- Full tower, open, with outriggers - includes enclosure: A, B, (2ea) U-rollups OPT
- Half tower, open, with outriggers - includes enclosure: A, B, (2ea) U-rollups OPT
- Full tower, express, with outriggers OPT
- Full tower, express flybridge, with outriggers - includes enclosure: A..... OPT
- Half tower, express flybridge, no outriggers - includes enclosure: A OPT
- Half tower, express flybridge, with outriggers - includes enclosure: A..... OPT
- Express outriggers..... OPT
- Teaser reel mounting location in flybridge hardtop (with express bridge option) OPT
- Electronics navigation package (full tower, open)..... OPT
- Electronics navigation package (half tower, open) OPT
- Electronics navigation package (no tower, express)..... OPT
- Electronics navigation package (full tower, express) OPT
- Electronics navigation package (full tower, express flybridge) OPT
- Electronics navigation package (half tower, express flybridge) OPT

Mezzanine seating with cushions

- Bait and tackle center with drawers OPT
- Integrated folding port and starboard bench seats..... OPT

2 insulated storage boxes in mezzanine step

Insulated storage box under mezzanine seat

- Bait freezer under mezzanine seat..... OPT

Cockpit, 138 square feet including mezzanine, two insulated fish boxes with macerator, stainless steel rod holders (4), and mounting plate for installation of rocket launcher

- Teaser reel mounting location in helm deck hardtop (not available with express bridge option) OPT
- Teak helm deck..... OPT
- Helm deck carpet OPT

Insulated transom fishbox with drain and macerator

- Circulating livewell with LED lighting in transom fishbox..... OPT
- Glass window in transom fishbox..... OPT
- Teak coaming boards OPT
- Teak cockpit sole OPT
- Teak covering boards..... OPT
- Teak mezzanine deck..... OPT

Transom door with heavy duty polished stainless steel hardware and lift up coaming gate

- Port in deck refrigerated fishbox..... OPT

INTERIOR APPOINTMENTS

Wood Finishes / Wall Covering / Fabric:

Fabric headliner installed on track system

Rift cut white Oak interior, satin finish

- Teak interior, high gloss finish OPT
- Natural Walnut interior, satin finish OPT

GT series tier 1 interior fabrics, wallcoverings, and countertops (upgrades available at the Hatteras Design Center)

Flooring:

GT series tier 1 vinyl flooring throughout (flooring upgrades available at the Hatteras Design Center)

Integrated Interior Furnishings:

- L-Shaped lounge with storage beneath, wood table and stainless base
- Master stateroom, queen sized tapered berth and nightstands
- Hanging locker storage in stateroom
- Mirrored storage cabinet over sink in head
- Cedar lined storage areas in all staterooms

Design Features:

- Bilge access through deck hatches
- Fixed frameless windows with laminated glass at helm deck
- Main cabin skylight
- 3 screened overhead hatches with privacy shades

Interior Lighting:

- Dimmable LED lighting in salon and master stateroom
- White LED lights in engine room
 - Bicolor LED (blue/white) lights in engine room..... OPT

Mattresses:

- Master stateroom, queen-sized mattress - System 2
 - Optional guest stateroom, latex twin mattresses..... OPT
 - Master stateroom, queen-sized mattress upgrade - System 3..... OPT

EXTERIOR APPOINTMENTS

Integrated Exterior Furniture:

- Helm deck, integrated helm console captain & starboard companion helm chairs, lounge seating with storage beneath, starboard cabinet with storage and refrigerator
 - Helm deck, helm chair premium upgrades (2) - captain and starboard companion (2 chairs, includes helm chair covers) OPT
 - Helm deck, 3rd helm chair - companion helm chair on the port side OPT
 - Helm deck, helm chair premium upgrades (3) - captain, starboard and port companion (3 chairs, includes 3rd helm chair option and helm chair covers) OPT
 - Flybridge, helm chair premium upgrade, captain (1 chair, includes helm chair cover) OPT
 - Flybridge, companion helm chair on the port side OPT
 - Flybridge, helm chair premium upgrades (2), captain and port companion (2 chairs, includes companion chair option and helm chair covers) OPT
 - Teak helm deck table with cover (standard 2 helm chair arrangement on helm deck)..... OPT
 - Teak helm deck table with cover (3 helm chair arrangement on helm deck) OPT

Exterior Engineering:

- Open helm deck with wrap around windshield with windshield wipers
- Palm Beach style helm with single lever electric controls and steering wheel
 - Teak helm pod (helm deck) OPT
 - Teak helm pod (express bridge helm option) OPT
 - Swim platform with reboarding ladder..... OPT

Exterior Hardware and Anchoring System:

- Anchor, 25' of galvanized chain, 250' anchor line
 - Fiberglass pulpit with anchor chute and windlass, 1,700 pound, rope-chain with deck mount control switches..... OPT
 - Aluminum bow rails OPT
 - Polished, stainless steel bow rail..... OPT
- Four polished stainless steel spring cleats
- 2 polished stainless steel bow cleats and 2 stern cleats and hawse pipes
- Dual air horn

Exterior Lighting:

- DC LED tricolor overhead lights in helm deck area
- Underwater LED lights (2) in transom - white
 - Underwater LED lights (2) in transom - upgrade intensity / bicolor (white and blue)..... OPT
 - Underwater LED lights (2) in transom - upgrade intensity / full spectrum, dancing OPT
 - Tri-color coaming lights OPT

APPLIANCES

Interior Appliances:

- Under counter refrigerator and freezer drawer unit, microwave oven, and ceramic cook top in galley
 - Additional under counter refrigerator/freezer unit (in lieu of standard storage)..... OPT

Exterior Appliances:

- Electric grill built into starboard storage cabinet OPT
- Ice maker in starboard helm deck cabinet (in lieu of standard storage)..... OPT
- Eskimo ice machine..... OPT

HULL / EXTERIOR

Propulsion / Fuel Systems / Hull Design and Performance:

- Resin-infused foam core with solid fiberglass hull bottom; resulting in stronger and lighter construction, backed by Hatteras 10 year hull warranty
- Hull and super structure painted with a white premium polyurethane coating for increased durability and improved cosmetic finish
 - Light colored hull paint (non-metallic) OPT
 - Dark colored hull paint (non-metallic)..... OPT

- Ablative polymer/copper based anti-fouling bottom paint
- Molded fiberglass longitudinal stringers with steel engine beds
- Finished engine room and bilges for improved cosmetics
- Twin Caterpillar® C-12.9A 835 BHP diesel engines
 - Twin CAT C-12.9 985 BHP diesel engines..... OPT
 - Twin CAT C-18A 1,135 BHP diesel engines OPT
 - Seakeeper 6 gyro stabilization system OPT
 - Electric bow thruster OPT
 - CAT Three60 joystick control system with bow thruster (available with C-18A engines only)..... OPT

- Hydraulic power-assisted steering
- Oil change system for engines, gears and generator
- U.L. Marine-listed duplex fuel filters/water separators, engines and generators
- Electric fuel priming pumps for engines
- 800 gallon fiberglass fuel tanks constructed with fire retardant resin
- Stainless steel steering tie bar with pivoting self aligning ball joint connection at all cylinder and tie bar connections
- Bronze rudder with stainless steel shaft
- Manganese bronze rudder ports with composite bearings, shaft couplings and struts
- Transom zinc
- Alloy 22 high strength tapered propeller shafts with zincs and round keys for reduced stress concentrations at propeller and coupling ends
- Nibral high performance propellers
- All underwater through hull valves are bronze/chrome through-bolted with electrical bonding throughout

Engine Room Systems:

- FM200 fire extinguisher system with automatic and manual controls
- DC ventilation fan
- 24V high volume DC bilge and sump pump systems
- Insulation in engine room ceiling, for noise mitigation on helm deck
- Individual pickup sea chests for each engine and gensets, high speed sea chest for water makers, air conditioners and raw water pumps
- Centralized drain system with single thru-hull

Water Systems:

- 20 gallon water heater
- 100 gallon polyethylene water tank
- Pressurized fresh water pump
- Water manifold with centralized shut off valve for sinks and showers
 - Raw water wash down outlet OPT
- 24V DC sealed shower sumps
- Fresh water wash down outlet
- 43 gallon holding tank plumbed for dockside pump out
- Holding tank 3/4 full indicator light in all heads
- Shore water connection with pressure reducing valve
 - Watermaker - 600 GPD OPT
 - Hot and cold hand held shower..... OPT

Electrical Systems:

- One 240 volt, 50 amp, retractable shore cord
- Shoreline polarization transformer
- AGM 24 volt heavy duty marine battery banks mounted in fire retardant fiberglass boxes (2)
- Automatic battery charger
- Battery paralleling switch at helm
- Battery control panel with fuses, voltmeter, and isolation switches
- AC and DC distribution panels with magnetic circuit breakers in main cabin
 - 12V electric reel outlets in cockpit (2)..... OPT
 - Electrical system - full 50 HZ 220V OPT

System Monitoring:

- Systems Monitor display with visual and audible signals for exhaust temperature, alternator, battery voltage, high bilge water, fire warning in engine compartment, fire extinguisher discharge in engine room, AC power loss, smoke and carbon monoxide detectors, and holding tank 3/4 monitor
- Lighted compass

Entertainment Equipment:

- Omni-directional TV antenna
- Integrated helm and cockpit DC AF/FM stereo with USB dock and speakers
- Independent audio video system in each living area to include LED Televisions, DC AM/FM stereos, USB ports, and speakers
 - Whole boat audio video streaming integration from one source with integrated audio and video storage capabilities for offshore viewing without data connections (Kaleidoscope)..... OPT
 - Internet package OPT
 - Satellite internet package..... OPT
 - DIRECTV package..... OPT

Air Conditioning:

- Interior air conditioning, 18,000 BTU capacity, with reverse cycle heating
- HVAC controls located in the main cabin, forward stateroom and starboard head
- Flybridge helm station air conditioning 8,000 BTU capacity (flybridge selected)
- Helm deck air conditioning 32,000 BTU capacity, open (standard on express hardtop and express flybridge models)

Supply Items:

Braided nylon mooring lines (6)

Life jackets (6)

Fenders (2)

Life ring

Prop removal and installation tool..... OPT

Portable “drychem” fire extinguishers (4), U.L. approved type in compliance with United States Coast Guard and ABYC standards

Hand held air horn

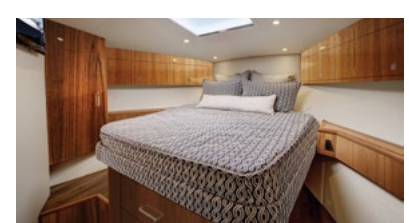
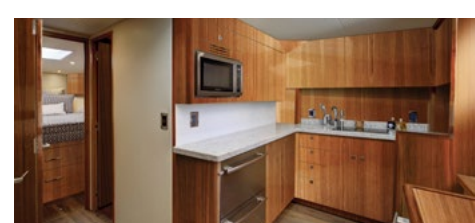
Vessel supply items (details in supplement)

One 4 person life raft with hydrostatic release on boat deck in compliance with United States Coast Guard and ABYC standards OPT

CE certification..... OPT

HATTERAS WARRANTY

1 year world wide warranty: see Express Limited Warranty for details



Hatteras Yachts, LLC | 110 North Glenburnie Road | New Bern, North Carolina, U.S.A. | www.HatterasYachts.com

Note: Not all accessories shown in pictures or described herein are standard equipment or even available as options. Options and features are subject to change without notice. Not all model year boats may contain all the features or meet the specifications described herein. Confirm availability of all accessories and equipment with an authorized Hatteras Yachts dealer prior to purchase. Printed in the U.S.A. June 2019. ©Hatteras Yachts